

STRUCTURAL MODULARS, INC.

The Westford



TWO-STORY
2048 SQ FT

3 Bedrooms
2 Full Baths, 1 Half Bath
Mudroom
Optional Garage

Overview: The Westford offers a spacious, casual open floor plan that includes a two story foyer, a large living room with plenty of windows, a kitchen with center island and a dining room with glass doors and a half bath. The second floor features three bedrooms including a master suite with walk-in closet and master bath, another full bath and the convenience of a second floor laundry.

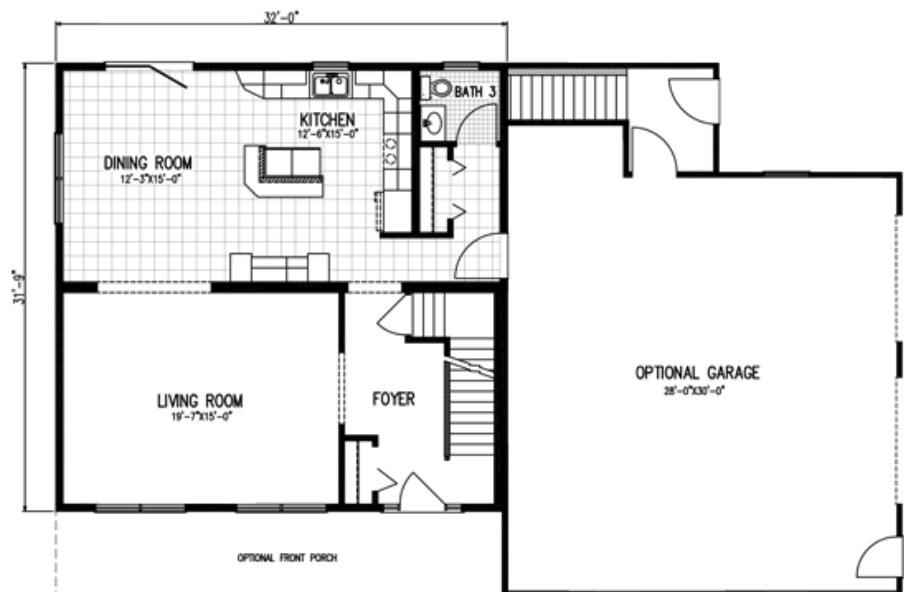
Notes: All floor plans can be customized to fit your needs. We design and construct the modular to your specifications.

Elevations may include additional builder construction such as porches, garages, decks, etc.

Structural Modulares, Inc.
101 Southern Avenue
P.O. Box 315
Strattanville, PA 16258
Phone: 800.216.7849
Fax: 814.764.5852
E-mail: info@smihomes.com



2ND FLOOR- 1024 SQ FT



1ST FLOOR- 1024 SQ FT