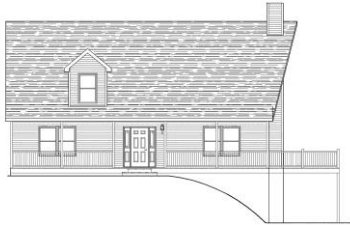


# STRUCTURAL MODULARS, INC.

## The Allegheny



### CAPE COD

**1408 SQ FT – 1<sup>st</sup> floor**

**589 SQ FT – 2<sup>nd</sup> floor**

**Open Floor Concept**

**3 Bedrooms**

**2 Full Baths**

**Large Closets**

**Loft**

### Overview:

The Allegheny, which features a prow roof overhang, offers a vaulted ceiling in the living and dining rooms with glass sliders in both rooms; a kitchen with a center island; downstairs. The second floor includes another bedroom with walk-in closet, a full bath, and a loft overlooking the living and dining rooms.

### Notes:

All floor plans can be customized to fit your needs. We design and construct the modular to your specifications.

Elevations may include additional builder construction such as porches, garages, decks, etc.

### Structural Modulars, Inc.

101 Southern Avenue

P.O. Box 315

Strattanville, PA 16258

Phone: 800.216.7849

Fax: 814.764.5852

E-mail: [info@smihomes.com](mailto:info@smihomes.com)

