

# STRUCTURAL MODULARS, INC.

## The Warford



### TWO-STORY 3496 SQ FT

**3 Bedrooms**  
**2 Full Baths, 1 Half Bath**  
**2nd Floor Laundry Room**  
**Mud Room**

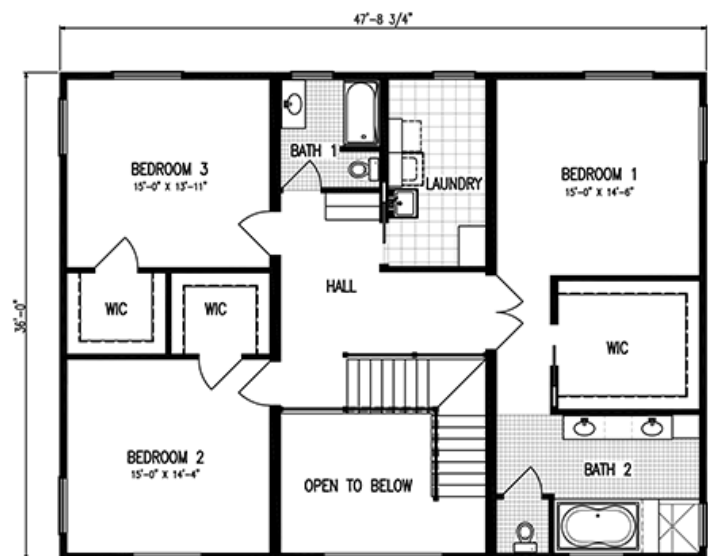
**Overview:** The Warford is a spacious 3 bedroom, 2 1/2 bath 2 story. Plan shows all bedrooms with a walk-in closet, 2nd floor laundry with freestanding laundry tub, foyer open to 2nd floor, spacious kitchen with nook, octagon bump-out on 1st floor rear of house, sliding patio doors at family room, dining room, pocket door from family room to mud room, and garden tub in master bath with optional ceramic tile shower.

**Notes:** All floor plans can be customized to fit your needs. We design and construct the modular to your specifications.

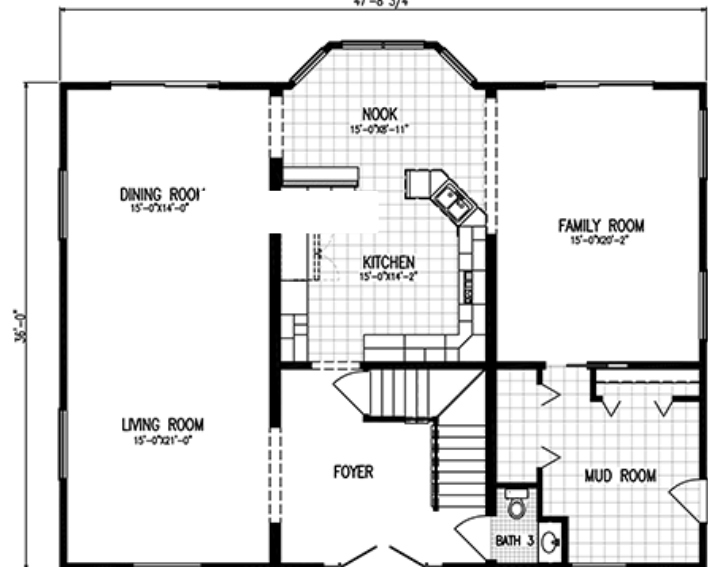
Elevations may include additional builder construction such as porches, garages, decks, etc.

### Structural Modulars, Inc.

101 Southern Avenue  
P.O. Box 315  
Strattanville, PA 16258  
Phone: 800.216.7849  
Fax: 814.764.5852  
E-mail: info@smihomes.com



2ND FLOOR- 1728 SQ FT



1ST FLOOR- 1768 SQ FT