

The Fisher



STRUCTURAL MODULARS, INC.

www.smihomes.com

Design • Construct • Live



THE FISHER RANCH

1512 SQ FT

L-Shaped Kitchen
2 Bedrooms
Office
2 Baths
Optional Basement

Overview:

The interior of The Fisher features a master suite with a spacious walk-in closet, garden tub with a ceramic tile platform, spacious kitchen with 36" wide bar top island, 1st floor laundry with a freestanding laundry tub w/faucet, and hall bath with a 60" walk-in shower.

Notes:

All floor plans can be customized to fit your needs. We design and construct the modular to your specifications.

Elevations may include additional builder construction such as porches, garages, decks, etc.

Structural Modulares, Inc.

101 Southern Avenue

P.O. Box 315

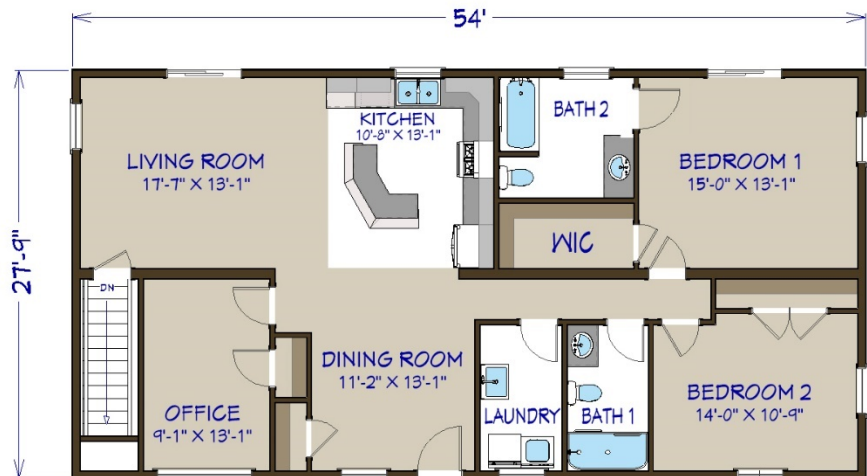
Strattanville, PA 16258

Phone: 800.216.7849

Fax: 814.764.5852

E-mail: info@smihomes.com

Website: smihomes.com



The Fisher

1512 Square Feet

