

THE OCEANSIDE - 4257 SQ FT

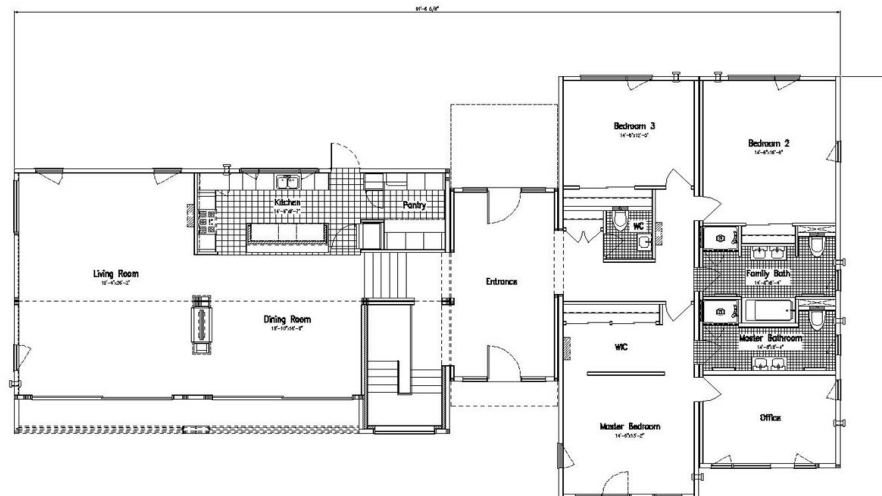


Specs

- Living Room
- Dining Room
- Kitchen w/ Walk-in Pantry
- Master Bedroom and Bath
- 2 Guest Bedrooms and Bath
- 1/2 Bath
- Office

Products & Materials

- Duravit
- Lutron
- Merrilate
- Plastpro
- Porcelanoso



Building this home was an opportunity for us to work with **evoDOMUS**, a fantastic architectural firm out of Cleveland, OH. They were looking for a new modular manufacturer back in May of 2016 and after touring our facility and talking with everyone they were ready to build with us!

Martha's Vineyard was the setting for this beautiful structure and after delivering the house in 8 parts (boxes) the home was set in the Fall of 2016 and finished by the Summer of 2017.